

# DELL™ UPS SOFTWARE



**MONITOR MULTIPLE UPS PRODUCTS THROUGH ONE GRAPHICAL INTERFACE FOR CONTROL, MANAGEABILITY, AND SECURITY.**

## REMOTE MONITORING AND CONTROL OF UPS PRODUCTS

Dell UPS Management Software supports Uninterruptible Power Supply (UPS) products connected to an individual computer as well as UPS models connected to a network using the Network Management Card (NMC). The Dell UPS Management Software allows you to monitor and manage several UPS products through one intuitive graphical user interface. In addition to monitoring the UPS products the software also safeguards computer systems from uncontrolled shutdowns due to power failure.

With the Dell UPS Management Software, you can configure UPS products on any computer within the same LAN and monitor their status. Using the UPS software, you can manage the power to multiple computers on a network as well as shut systems down in the event of a utility power failure, saving vital application data. The Dell UPS Management software also supports different UPS products in redundant configurations<sup>1</sup> through the same user interface.

## DELL UPS MANAGEMENT SOFTWARE COMPONENTS

Dell UPS Management Software has three components. Of these, the first is the Agent, which is the core component and runs in the background as a system service. It communicates with the UPS, logs events, notifies users of events, arranges actions according to the user's specifications, and initiates shutdown when necessary. The Agent can be managed by the Monitor.

The Monitor is the graphical user interface application of the Dell UPS Management Software. Communicating with the Agent, it gathers real-time UPS information, UPS status, and server information, and allows the user to tailor the UPS working parameters. It can run on any computer on the LAN or on a standalone computer. The final component, the Tray Icon, is the management tool of the Dell UPS Management Software, and it appears in the status area of the system task bar. It is available only for the Microsoft® Windows® platform.

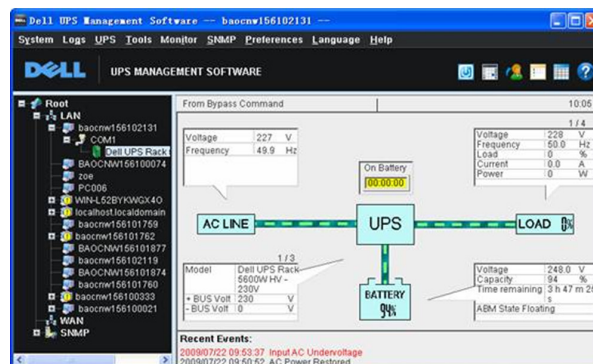
## DELL UPS MANAGEMENT SOFTWARE FEATURES

Dell UPS Management Software features include:

- User-friendly GUI showing status of all locally connected and networked Dell UPS products
- Remote control and configuration of Dell UPS products through network
- Redundant UPS configurations support even with different Dell UPS products
- Automatic closing of applications and initiation of multiple server shutdown in the event of power failures
- Wake on LAN server action enablement after power outage
- Energy-saving design: Manages timed (on/off) control of UPS
- Allows customized messaging upon power events
- Easy access to historical data logs and events
- Automatic local and network discovery of all Dell UPS products
- Self test and power on/off scheduling calendar

## ADDITIONAL ADVANTAGES

The Dell UPS Software is bundled free of charge with every Dell UPS, so you can manage multiple servers and UPS products without buying additional software. The software also includes information in English, German, Spanish, French, Russian, Simplified Chinese, Traditional Chinese, Japanese, and Korean. Finally, you have the assurance that the Dell UPS Software is Dell tested, approved, and supported.



<sup>1</sup>Dell UPS Software allows redundant communication via 1 USB UPS + 4 RS232 UPS, or 1 USB UPS + multiple Ethernet (NIC card) enables UPSs.

<b>System Requirements</b>
<b>A minimum of 128 MB of physical memory (256 MB is recommended)</b>
<b>A minimum of 160 MB of hard disk space</b>
<b>More than 256 colors and 800 x 600 resolution or above display is recommended</b>
<b>Administrator credentials for the Microsoft® Windows Vista® operating system</b>
<b>Superuser credentials for Linux® operating systems</b>
<b>TCP/IP communication protocol installed to support network management</b>
<b>An available communication port (RS-232 serial port or USB port)</b>
<b>Platforms Supported by Dell UPS Management Software</b>
<b>Microsoft Windows Server® 2008, Standard Edition</b>
<b>Microsoft Windows Server 2008, Standard x64 Edition</b>
<b>Microsoft Windows Server 2003 R2, Standard Edition with SP2</b>
<b>Microsoft Windows Server 2003 R2, Standard x64 Edition with SP2</b>
<b>Microsoft Small Business Server 2003 R2 with SP2</b>
<b>Red Hat® Enterprise Linux 5, x32 and x64, 1-2 socket</b>
<b>Red Hat Enterprise Linux Advanced Platform</b>
<b>Novell® SUSE® Linux Enterprise Server 10 with SP2</b>
<b>Microsoft Windows® XP Professional with SP3</b>
<b>Microsoft Windows XP Home with SP3</b>
<b>Microsoft Windows Vista Home Premium with SP1</b>
<b>Microsoft Windows Vista Business with SP1</b>
<b>Microsoft Windows Vista Ultimate with SP1</b>
<b>UPS Models Supported</b>
<b>Dell UPS Tower 500W</b>
<b>Dell UPS Tower 1000W</b>
<b>Dell UPS Tower 1920W</b>
<b>Dell UPS Rack/Tower 3U 2700W</b>
<b>Dell UPS Rack 1000W 2U</b>
<b>Dell UPS Rack 1920W 2U</b>
<b>Dell UPS Short Depth Rack 2700W 4U High Efficiency Online</b>
<b>Dell UPS Rack 3750W 4U High Efficiency Online</b>
<b>Dell UPS Rack 4200W 4U High Efficiency Online</b>
<b>Dell UPS Rack 5600W 4U</b>
<b>Dell UPS Rack 5600W 4U High Efficiency Online</b>

[www.kesintisizservis.com](http://www.kesintisizservis.com)

